



Instructions for Implementation

This toolkit was created based on a completed performance improvement CME/CE activity, and is designed based on the following model of performance or quality improvement:

- Stage A: Learning from current practice performance assessment
- Stage B: Learning from the application of quality improvement to patient care
- Stage C: Learning from the evaluation of the quality improvement effort

Instructions for Stage A:

- Review a distinct number of charts and complete the Data Collection Form, one form per chart
- Calculate and analyze if patients were vaccinated based on the provided Quality Measures and Calculation Instructions
- Set goals for performance improvement

Instructions for Stage B:

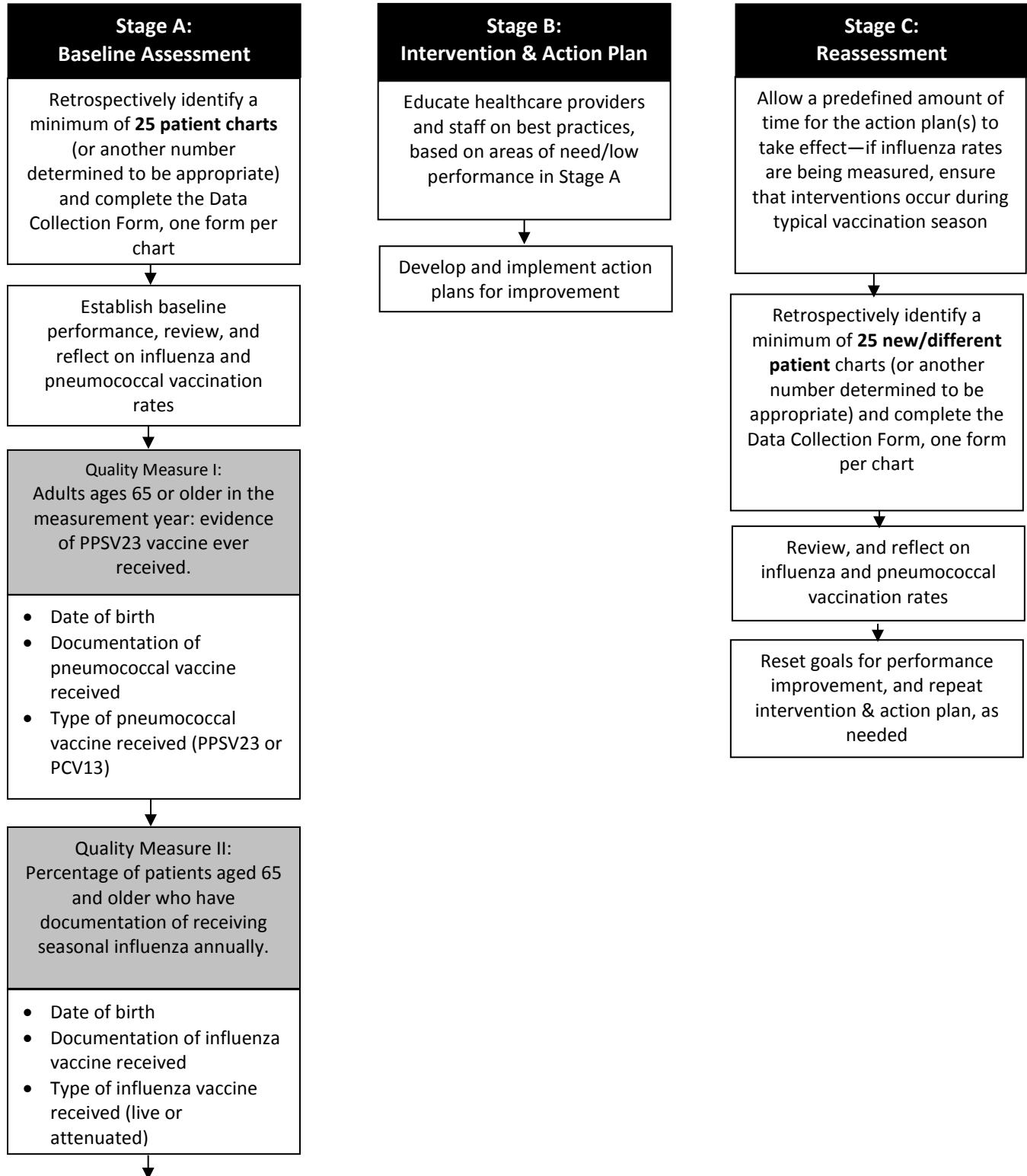
- Educate healthcare providers on best practices; PowerPoint slides used for interventions are available within this Toolkit, and/or you can use other sources to customize the education as needed
- Develop and implement action plans for improvement (as determined to be relevant and appropriate). An action plan template is provided for reference.

Instructions for Stage C:

- Allow a predefined amount of time for the action plan(s) to take effect
- Identify a distinct number of charts and complete the same Data Collection Form, one form per chart
- Calculate and analyze if patients were vaccinated based on the provided Quality Measures and Calculation Instructions
- If desired, set new quality goals again and repeat Stages B and C to reach desired outcome



Algorithm





Quality Measure III:
Percentage of high-risk patients aged 18-64 who have documentation of receiving pneumococcal immunization.

- Date of birth
- Documentation of pneumococcal vaccine received
- Type of pneumococcal vaccine administered (PPSV23 or PCV13)
- High risk diagnosis



Quality Measure IV:
Percentage of high-risk patients aged 18-64 who have documentation of receiving seasonal influenza annually

- Date of birth
- Documentation of influenza vaccine received
- Type of influenza vaccine administered (live or attenuated)
- High risk diagnosis



Set goals for performance improvement